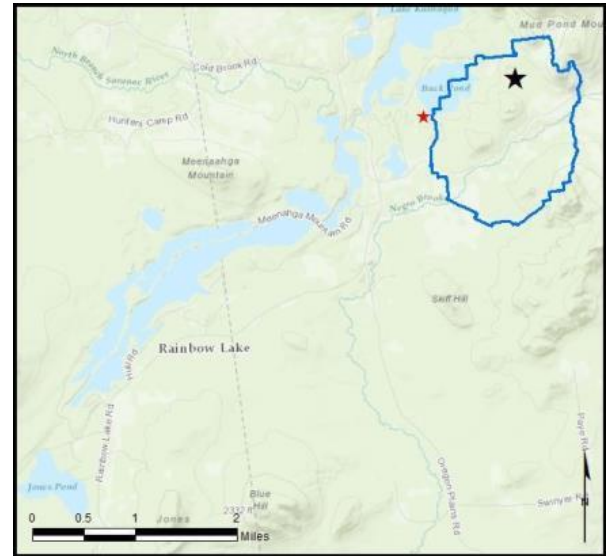


Rainbow Lake - Buck Pond

AIS intercepted: 0
Boats inspected: 1,007
Number of visitors: 1,447
Boats failing inspection: 0.9%

Dates of operation: May 24 – August 20
Total number of days covered: 84
Weekly coverage: 5-7 days
Visitors showing spread prevention awareness: 69%
Number of previously visited waterways: 54

AIS present in waterbody: none
Stewardship history: 2005 - present
Partnership: Rainbow Lake Association



Watercraft	Boat Type										total # boats observed	total # boats inspected
	Barge	Canoe	Dock	Kayak	Motor	PWC	Row	Sail	SUP	Wind		
# boats observed	0	138	0	586	258	10	7	2	11	0	1012	1007
percentage of total boats	0%	14%	0%	58%	25%	1%	1%	0.2%	1%	0%	100%	99.5%

Boats observed at launch, including those not inspected. PWC=personal watercraft, SUP=stand-up paddleboard, Wind=windsurfer.

total # visitors	organisms found			total organisms	# boats dirty	# boats w/AIS	# of inspections	% of inspected boats dirty	% of inspected boats w/AIS
	entering	leaving	roadside						
1447	5	4	--	9	9	0	1007	0.9%	0%

Boats dirty = watercraft with any organic material, invasive, non-invasive or unknown.

Visitor Responses	AIS spread prevention awareness											# groups asked
	yes	Inspect	Wash	Drain	Bait	LW	Dry	Decon	same lake	first/frozen	didn't ask	
# groups	447	53	295	11	0	3	61	6	13	87	7	649
percentage of total groups asked	69%	8%	45%	2%	0%	0.5%	9%	1%	2%	13%	NA	

Yes = showed AIS spread prevention awareness; Drain = drained bilge; Bait = emptied bait bucket/disposed of bait; LW = drained livewell; Dry = dried boat; Decon = visited decon station; Same Lake = boat only goes in this lake; First/Frozen = first launch of the season or frozen boat.

Organisms Removed	Organism Type							total # AIS	% of inspected boats w/AIS
	Non-invasive	CLP*	EWM*	VLM*	SWF*	WC*	ZM*		
# organisms	9	0	0	0	0	0	0	0	0%
percentage of total orgs	100%	0%	0%	0%	0%	0%	0%	0%	

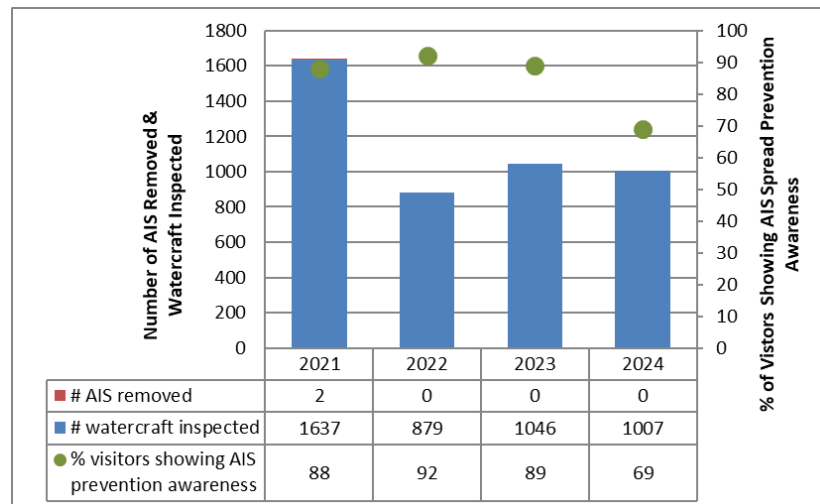
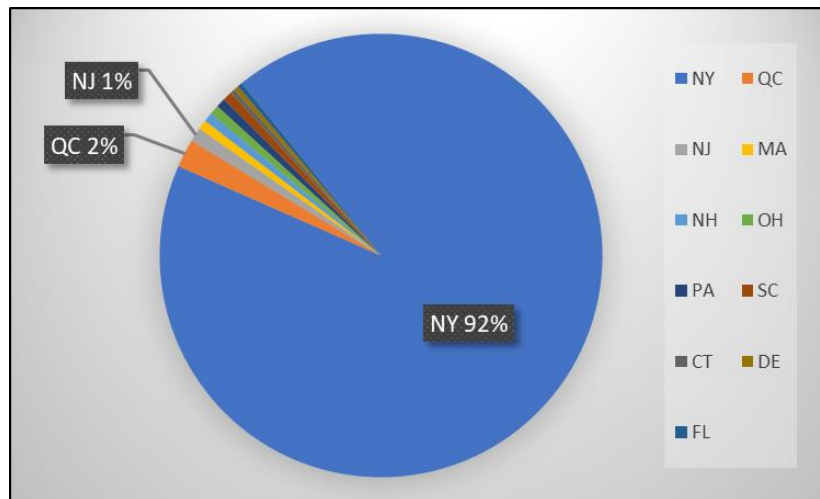
Non-invasive = native aquatic or terrestrial material; CLP = curly-leaf pondweed; EWM = Eurasian watermilfoil; VLM = variable-leaf milfoil; SWF = spiny/fishhook waterflea; WC= water chestnut; ZM = zebra mussel; */AIS = aquatic invasive species.

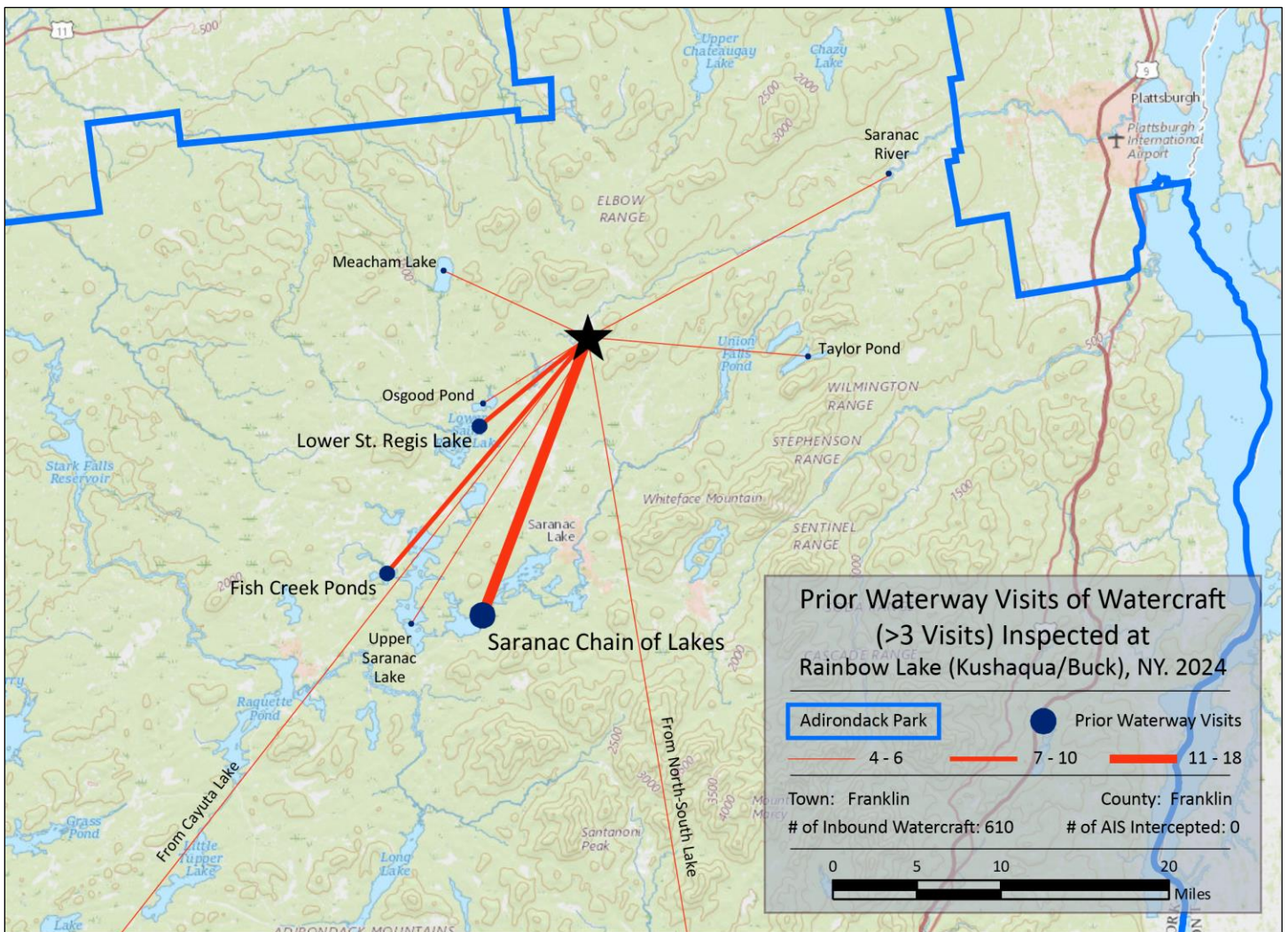
Previous Waterways for Launching Boats	# visits
SAME LAKE - PREVIOUS VISIT	222
NONE	221
Saranac Chain of Lakes (unspecified)	18
Fish Creek Ponds (Franklin County)	8
Lower St. Regis Lake (Franklin County)	8
Meacham Lake (Franklin County)	6
Osgood Pond (Franklin County)	6
Saranac River	6
Upper Saranac Lake (Franklin County)	6
Cayuta Lake (Schuyler County)	4
North-South Lake (Greene County)	4
Oregon Pond (Franklin County)	4
Taylor Pond (Clinton County)	4
UNKNOWN (boater doesn't know)	4
Unspecified Private Owned	4
Black Pond (Franklin County)	3
Chateaugay Lake (Clinton/Franklin Counties)	3
Follensby Clear Pond (Franklin County)	3
Follensby Pond (Franklin County)	3
Jones Pond (Franklin County)	3
Lake Champlain	3

Previous Waterways for Launching Boats	# visits
Long Pond St. Regis Canoe Area (Franklin)	3
Adirondacks (unspecified)	2
Alcove Reservoir (Albany County)	2
Atlantic Ocean	2
Ausable River	2
Chapel Pond (Essex County)	2
Cheshire Reservoir, Cheshire, MA	2
Fern Lake (Clinton County)	2
Fish Pond (Franklin County)	2
Glass Lake (Rensselaer County)	2
Horseshoe Lake (Franklin County)	2
Lake Colby (Franklin County)	2
Lake Flower (Essex/Franklin Counties)	2
Lake Placid (Essex County)	2
Long Lake (Hamilton County)	2
Middle Saranac Lake (Franklin County)	2
Moose Pond Campground (Essex County)	2
Mud Pond (Clinton County)	2
Nicks Lake (Herkimer County)	2
REFUSED TO ANSWER	2
Rich Lake (Essex County)	2

Previous Waterways for Launching Boats	# visits
Rollins Pond (Franklin County)	2
Schroon Lake (Essex/Warren Counties)	2
Tupper Lake (Franklin County)	2
Upper St. Regis Lake (Franklin County)	2
Blake Falls Reservoir (St Lawrence County)	1
Chazy Lake (Clinton County)	1
Franklin Falls Pond (Franklin County)	1
Great Chazy River, NY	1
Keuka Lake (Steuben/Yates Counties)	1
Lake Clear (Franklin County)	1
Lake George (Essex/Warren/Washington)	1
Little Clear Pond (Franklin County)	1
Lower Saranac Lake (Franklin County)	1
Mascoma Lake, Lebanon, NH	1
Mohawk River	1
Moose Pond (Hamilton County)	1
NOT ASKED	1
Round Valley Reservoir, NJ	1
St. Lawrence River	1
Tirrel Pond (Hamilton County)	1
Total	610

State of Motorized Boat Registration
(n=291)





Buck Pond Boat Launch