

Rainbow Lake - Buck Pond

AIS intercepted: 0

Boats inspected: 1,105

Dates of Operation: May 26 – August 31

Number of visitors: 1,794

Boats failing inspection: 0.8%

Total Number of Days Covered: 65

Weekly Coverage: 5 days

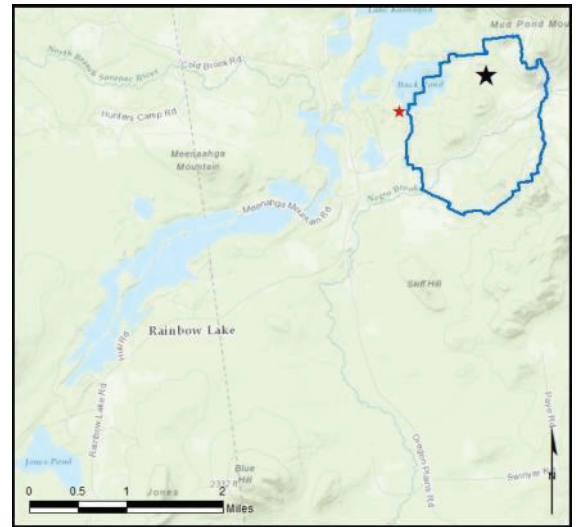
Visitors showing spread prevention awareness: 95%

Number of previously visited waterways: 48

AIS Present in Waterbody: none

Stewardship History: 2005 - present

Partnership: Rainbow Lake Association



Watercraft	Boat Type										total # boats observed	total # boats inspected
	Barge	Canoe	Dock	Kayak	Motor	PWC	Row	Sail	SUP	Wind		
# of boats observed	0	244	0	489	319	9	19	9	14	6	1109	1105
percentage of total boats	0%	22%	0%	44%	29%	1%	2%	1%	1%	1%	100%	100%

Boats observed at launch, including those not inspected. PWC=personal watercraft, SUP=stand-up paddleboard, Wind=windsurfer.

total # visitors	organisms found			total organisms	# boats dirty	# boats w/AIS	# of inspections	% of inspected boats dirty	% of inspected boats w/AIS
	entering	leaving	roadside						
1794	4	5	--	9	9	0	1105	0.8%	0%

Boats dirty = watercraft with any organic material, invasive, non-invasive or unknown.

Visitor Responses	AIS spread prevention awareness											# groups asked
	yes	Inspect	Wash	Drain	Bait	LW	Dry	Decon	same lake	first/frozen	didn't ask	
# of groups	728	315	36	69	4	20	267	6	153	69	13	766
percentage of total groups asked	95%	41%	5%	9%	1%	3%	35%	1%	20%	9%	NA	

Yes = showed AIS spread prevention awareness; Drain = drained bilge; Bait = emptied bait bucket/disposed of bait; LW = drained livewell; Dry = dried boat; Decon = visited decon station; Same Lake = boat only goes in this lake; First/Frozen = first launch of the season or frozen boat.

Organisms Removed	Organism Type									total # AIS	% of inspected boats w/AIS
	Non-invasive	BN*	CLP*	EF*	EWM*	VLM*	SWF*	WC*	ZM*		
# of organisms	9	0	0	0	0	0	0	0	0	0	0%
percentage of total orgs	100%	0%	0%	0%	0%	0%	0%	0%	0%		

Non-invasive = native aquatic or terrestrial material; BN = brittle naiad; CLP = curly-leaf pondweed; EF = European frogbit; EWM = Eurasian watermilfoil; VLM = variable-leaf milfoil; SWF = spiny waterflea; WC = water chestnut; ZM = zebra mussel; */AIS = aquatic invasive species.

Previous Waterways for Launching Boats	# visits
SAME LAKE - PREVIOUS VISIT	328
NONE	174
Lake Champlain	20
Fish Creek Ponds	18
Upper Saranac Lake	15
RENTAL	13
Rollins Pond	12
Lake Flower	7
Loon Lake (Franklin County)	7
Raquette Lake	7
Big Moose Lake	6
unspecified lake in New York	6
Chateaugay Lake	5
Lower Saranac Lake	5
Osgood Pond	5
Raquette River	5
Saranac River	5
Schroon Lake	5
Follensby Clear Pond	4
Mirror Lake	4

Previous Waterways for Launching Boats	# visits
UNKNOWN (boater doesn't know)	4
Lake Colby	3
Loon Lake (Warren County)	3
Middle Saranac Lake	3
Allegheny River, PA	2
Atlantic Ocean	2
Fern Lake, Black Brook, NY	2
Franklin Falls Pond	2
Lake George	2
Lake Placid	2
Lewey Lake	2
Little Clear Pond	2
Moose Pond, St. Armand, NY	2
NOT ASKED	2
Otis Reservoir, Otis, MA	2
South Meadow Pond, Clinton, MA	2
St. Regis River	2
Taylor Pond, Black Brook, NY	2
unspecified lake in Florida	2

Previous Waterways for Launching Boats	# visits
unspecified lake in New Hampshire	2
Ausable River	1
Black Lake	1
Carry Falls Reservoir	1
Connecticut River, CT	1
Hudson River	1
Indian Lake	1
Jones Pond, Brighton, NY	1
Kiawassa Lake	1
Lake Erie	1
Long Lake	1
Lower St. Regis Lake	1
Mountain View Lake	1
Shenandoah River, VA	1
St. Lawrence River	1
Tupper Lake	1
unspecified lake in Pennsylvania	1
unspecified lake in Vermont	1
Upper St. Regis Lake	1
TOTAL BOATS	714

State of Motorized Boat Registration
(n=319)

